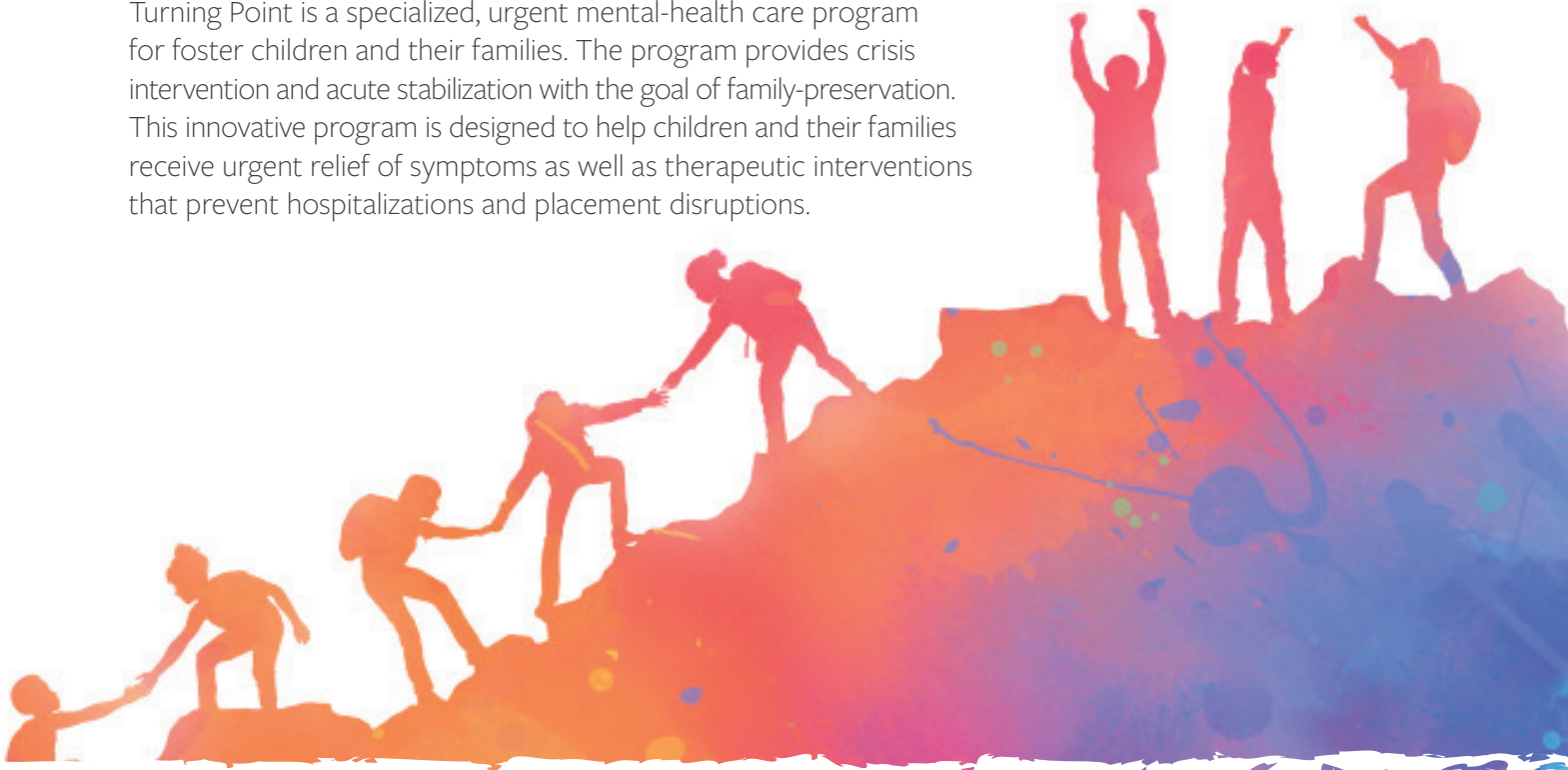


Are you struggling to manage your foster child's behavior? ACH is here to help.

Turning Point

24/7 Crisis assessment and intervention.

Turning Point is a specialized, urgent mental-health care program for foster children and their families. The program provides crisis intervention and acute stabilization with the goal of family-preservation. This innovative program is designed to help children and their families receive urgent relief of symptoms as well as therapeutic interventions that prevent hospitalizations and placement disruptions.



Foster families benefit from:

- A 24/7 crisis and information line
- Full mental-health evaluations including psychiatric services
- In-home assessments, as needed
- Intensive counseling
- Personalized consultation for the entire family
- 24-hour, short-term respite placement for youth ages 10 to 17, as needed, in a pleasant, residential environment
- Support and plans for post-reunification to help families better handle future challenges

Call today for immediate assessment. 817.909.1171



The Turning Point program is a collaboration of ACH Child and Family Services, Cenpatico, and Empirica. Services are available to all foster families within CPS Region 3 and are provided by and at the Wedgwood Campus of ACH Child and Family Services in Fort Worth, Texas.

Funding partner:
Cenpatico

How we're staying COVID safe.

- We're admitting foster children in cohorts, or closed groups, to limit the number of new clients and families in the home
- Every child has a private room so personal items are not shared
- All children must have their temperature checked at intake, complete a COVID questionnaire and are required to wear a mask in community areas
- Parents use Zoom for family therapy, visitation and parenting groups. No on-site or off-campus visits are allowed

About ACH Child and Family Services

With more than a century of experience, ACH, a Fort Worth-based nonprofit agency, brings needed resources and skills to children and families struggling with life's challenges. Some of our 17 programs and services keep children and families together while others provide a healing home for children who can't live with their families. With the Our Community Our Kids division, ACH is leading the way in community-based care in seven counties of the Texas foster-care system.

The Turning Point program takes place in ACH's Wedgwood Campus in a southwestern neighborhood of Fort Worth. The setting features a large park area with playground, basketball court, baseball diamond and covered picnic area surrounded by home-like residences.

At ACH, our vision is for families to thrive and children to experience safety, hope and love.

