



October 4-6, 2022

KANSAS CITY MARRIOTT
DOWNTOWN KANSAS CITY, MO





SPECIAL THANKS

TO THE FOLLOWING INDIVIDUALS FOR SUPPORTING AND ORGANIZING THE 2022 COMMUNITY-BASED CHILD WELFARE NATIONAL SYMPOSIUM.



HOSTS

CARRIE BOLM, CEO



WAYNE CARSON, CEO



GLEN CASEL, CEO

MAUREEN BROCKMAN, VP



MIKE PATRICK, CEO



STEERING COMMITTEE

JULIE BROWN, *Event Manager*

ACH Child and Family Services

SHANNON CARUSO, *Stakeholder Engagement Manager*

Embrace Families

MICHELLE DOONKEN, *Director of Training*

ACH Child and Family Services

JEAN ELDER, *President/CEO*

JK Elder & Associates

KURT KELLY, *CEO/President*

Florida Coalition for Children

SONIA NOORMAN, *CEO*

West Michigan Partnership for Children

KATIE OLSE, *CEO*

Texas Alliance of Child and Family Services

SYMPOSIUM PLANNING PARTNER

FFTA | Family Focused Treatment Association

ERIC GIOVANNI

Director of Operations and Business Logistics

ALLIE KOSCIELNY

Manager of Signature Events

OCT
4-6
2022



SPONSORS

PRESENTING SPONSOR



TITLE SPONSOR



LUNCHEON SPONSORS



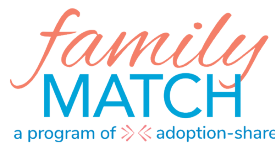
BREAKFAST, BREAK & RECEPTION SPONSORS



PRAESIDIUM



EXHIBIT SUPPORTERS



EVENT SPONSORS





SCHEDULE AT-A-GLANCE

	Activity	Speaker	Location
TUESDAY, OCTOBER 4			
7:00 pm - 9:00 pm	Evening Welcome Event and Registration		12th Street, Marriott 1st Floor
Sponsor: MILLER GROUP			
WEDNESDAY, OCTOBER 5			
7:30 am - 8:30 am	Registration and Continental Breakfast		Ballroom Foyer
Sponsors: KVC HEALTH SYSTEMS			
8:30 am - 10:30 am	Welcome and General Session	<p>Carrie Bolm <i>Missouri Alliance for Children & Families</i></p> <p>WELCOME</p> <p>The Honorable Hannah Kelly <i>Missouri State Representative</i></p> <p>KEYNOTE SPEAKER: Danny Mendoza <i>Together We Rise</i></p>	Count Basie Ballroom A&B
Sponsor: FIVE POINTS			
10:30 am - 10:45 am	Break		Ballroom Foyer
10:45 am - 12:00 pm	Breakout Session		See Schedule - Page 6
12:00 pm - 1:30 pm	Luncheon	<p>KEYNOTE SPEAKER: Ana Beltran <i>Generations United</i></p>	Count Basie Ballroom A&B
Sponsor: NATIONAL CERTIFICATION BOARD FOR CHILD WELFARE PROFESSIONALS			
1:45 pm - 3:15 pm	Breakout Session		See Schedule - Page 6
3:15 pm - 3:30 pm	Break		Ballroom Foyer
Sponsor: ENNIS CENTER FOR CHILDREN			
3:30 pm - 5:00 pm	The Case for Community-Based Care	<p>FACILITATOR: Carrie Bolm</p> <p>PRESENTERS: Wayne Carson, Glen Casel</p>	Count Basie Ballroom A&B
6:30 pm - 10:00 pm	Optional Off-site Activity	The Kill Devil Club	Power & Light District

OCT
4-6
2022



	Activity	Speaker	Location
THURSDAY, OCTOBER 6			
7:30 am - 8:30 am	Registration and Continental Breakfast		Ballroom Foyer
Sponsors: PRAESIDIUM			
8:30 am - 9:00 am	Welcome	Wayne Carson <i>ACH Child and Family Services</i> Glen Casel <i>Embrace Families</i>	Count Basie Ballroom A&B
Sponsor: CENTENE: SUNSHINE HEALTH, SUNFLOWER HEALTH PLAN & HOME STATE HEALTH			
9:00 am - 10:00 am	Lessons Learned from Kansas Q&A	Mike Patrick <i>TFI Family Services</i>	Count Basie Ballroom A&B
10:00 am - 10:15 am	Break		Ballroom Foyer
10:15 am - 11:45 am	Breakout Session		See Schedule - Page 6
11:45 am - 1:30 pm	Luncheon and Closing CBCWNS 2023 and Beyond	Carrie Bolm <i>Missouri Alliance for Children & Families</i> Wayne Carson <i>ACH Child and Family Services</i> Glen Casel <i>Embrace Families</i> Mike Patrick <i>TFI Family Services</i>	Count Basie Ballroom A&B
Sponsor: ELEVANCE HEALTH			



Continuing Education Information

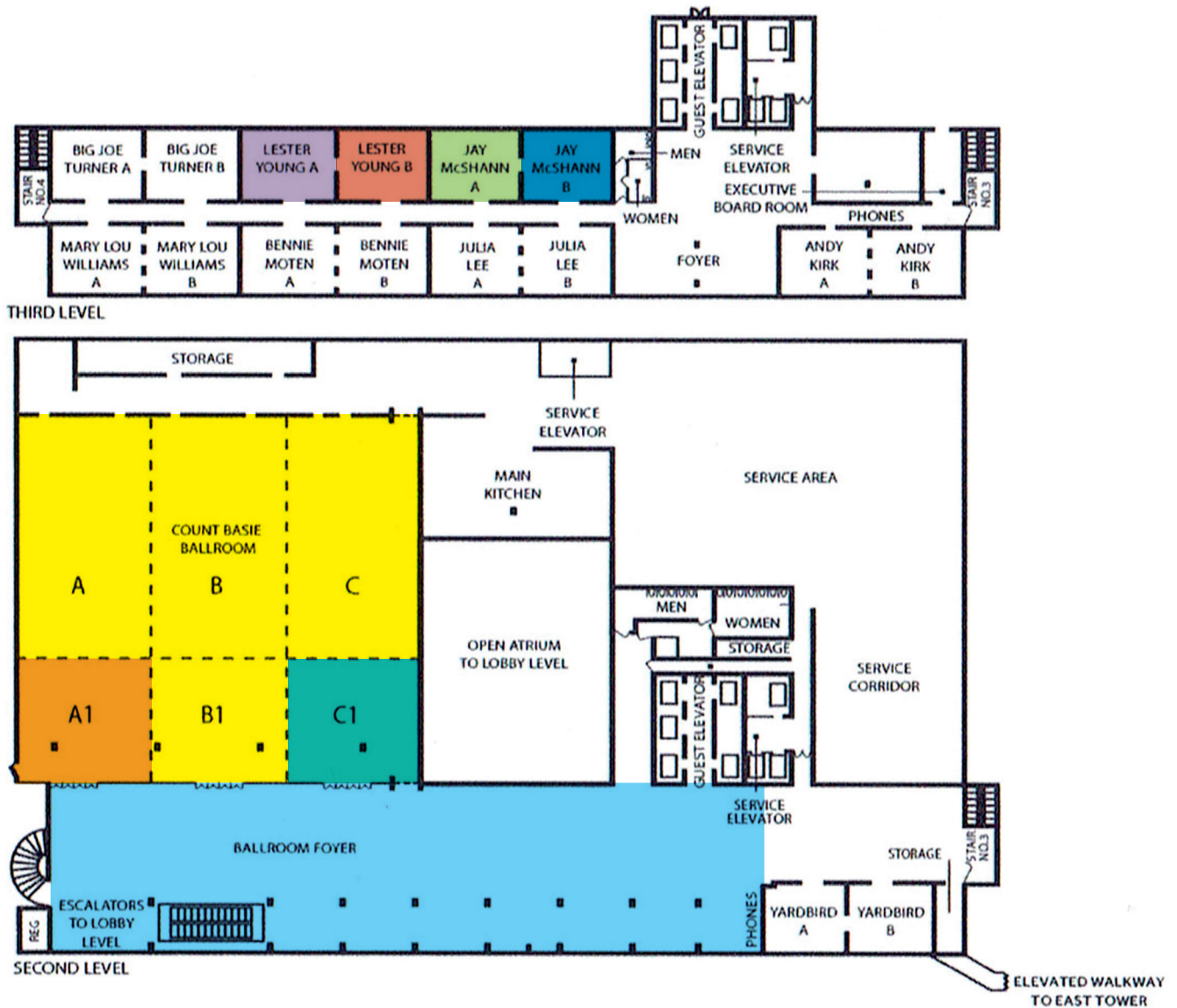
To receive continuing education credit, you must complete and sign the CEU Tracking form included in your registration packet and retain that form for your records. The conference is approved for up to 11.0 CEUs for licensed social workers and licensed professional counselors. Use the CEU form to document your attendance for specific sessions and for submission to your licensing board as appropriate. You must be present for the entire session and complete the overall conference evaluation form to earn credit.



SESSION LOCATION MAP

EVENT/MAP KEY

- Breakfast and Snacks:** Ballroom Foyer
- General Sessions and Lunches:** Count Basie Ballroom
- Track 1 Breakouts:** Basie A1
- Track 2 Breakouts:** Jay McShann A
- Track 3 Breakouts:** Basie C1
- Track 4 Breakouts:** Jay McShann B
- Track 5 Breakouts:** Lester Young A
- Track 6 Breakouts:** Lester Young B



OCT
4-6
2022



BREAKOUT SESSIONS

	TRACK 1 (BASIE A1): System change and stakeholders	TRACK 2 (JAY McSHANN A): Financial Models and Tools	TRACK 3 (BASIE C1): Quality Services for Children and Families
ROOM	1	2	3
DAY 1 10:45 am - 12:00 pm	1. State Associations: Using the collective power of an entire state to advocate for supporting the CBC model and advancing strong legislation	4. Funding Models for CBC: State comparisons of pros and cons of different funding models	7. Placement: Matching children with the best placement quickly and effectively
DAY 1 1:45 pm - 3:15 pm	2. Working with Judicial Systems: A critical element of successful CBC	5. Medicaid: Using Medicaid to advance services for children and families	8. National Landscape: Bringing child welfare services back to a community level where it has evolved differently in different states
DAY 2 10:15 am - 11:45 am	3. Challenges of Change: How a paradigm shift to Community-Based Care requires a transformational change in both state agencies and provider culture	6. Managing Risk and Liability: Insurance, risk corridors, and other tools for managing risk	9. Families First Prevention Services Act: Examples of how states are expanding prevention services

	TRACK 4 (JAY McSHANN B): Essential functions for managing a CBC system	TRACK 5 (LESTER YOUNG A): Community Engagement and Advocacy	TRACK 6 (LESTER YOUNG B): Deep Dives
ROOM	4	5	6
DAY 1 10:45 am - 12:00 pm	10. Performance Measurement: Tools for improving results of provider networks	13. Engaging the Community: Lessons learned from community engagement approaches	16. Federal Lawsuits: Review of federal lawsuits and practical ideas for managing in the midst of them
DAY 1 1:45 pm - 3:15 pm	11. Contract Monitoring: Effective ways to contract with and monitor service providers for contract compliance while building a spirit of partnership	14. New Tools: Using social media and other tools to engage communities and advance the CBC model	17. Placement Challenges: Developing capacity for difficult to place youth
DAY 2 10:15 am - 11:45 am	12. Data Informed Decisions: Technology systems, data sharing approaches and data analytics tools to effectively manage a CBC network	15. Brand Protection and Media Management: Discuss different philosophies and approaches for media relations, responding to negative media, and brand support	18. Kinship: Examples of practical ways to expand and advance kinship placements





SYMPOSIUM HOSTS



Carrie Bolm serves as President and Chief Executive Officer of Missouri Alliance for Children and Families. She leads the overall strategic direction through a partnership of agencies to assure quality programs are provided while maintaining fiscal accountability. Carrie has an extensive history in the field of child welfare, serving in both the public and private sectors. Carrie holds a master’s degree in social work from University of Missouri-Columbia and her clinical license.



Maureen Brockman oversees communication and marketing for Embrace Families’ network of companies, as well as managing day-to-day operations of one of those companies: the Embrace Families Foundation. Responsibilities include management of internal and external communications, along with leadership of the Foundation’s fund development team, which oversees events, grants, major gifts and other revenue generating initiatives.



Wayne Carson has over 30 years of experience working with children and families in a variety of roles, the last 22 years as Chief Executive Officer of ACH Child and Family Services (ACH). With a focused mission to “Protect Children and Preserve Families”, and 700 dedicated staff, ACH operates 16 different programs in several counties providing a range of services that both prevent and treat child abuse, neglect, homelessness and family separation, and Our Community Our Kids, which delivers community-based care for a seven county region in north Texas.



Glen Casel has been an advocate for children for 30 years. As President/CEO of Embrace Families, he leads the region’s largest non-profit organization serving children and families, which provides foster care and related child services in Orange, Osceola and Seminole Counties. Glen is most proud of is the impact that his work has had on Florida’s children. Today in Central Florida, under the community-based care model he helped initiate, more children are reunified with their families, more children are adopted into forever families, more children receive regular medical and dental care, fewer young people turn 18 while in foster care, and more young people graduate with degrees, among a host of other positive indicators.



Michael Patrick is the Chief Executive Officer (CEO) for the The Family Initiative, Inc. (TFI). In addition to being CEO of the parent company, he also oversees TFI’s Family of Companies operations which include: TFI Family Services, Inc. in Kansas and Nebraska, Pathway Family Services in Kansas, TFI Family Connections in Oklahoma, The Texas Family Initiative in Texas, as well as Mainstream Nonprofit Solutions and Foster Care Technologies, both of which are multi-state organizations. Additionally, Michael Patrick has been on the ground floor of community-based care since it began in Kansas in 1997. TFI currently provides Case Management/Community-Based Care services in Region 2 in Texas and Areas 4 and 8 in Kansas.

OCT
4-6
2022



KEYNOTE SPEAKERS



Danny Mendoza
CEO and Founder
Together We Rise

Danny Mendoza is a world-renowned foster care advocate known for his dedication to improving circumstances for vulnerable foster children nationwide. Serving as a leader in philanthropic team-building and events, Danny empowers thousands of individuals, groups, and organizations to give back to their communities every year. Through his work developing programs such as Ella, Foster Together, and multiple scholarship programs, Danny has helped engage over 500,000 new foster care volunteers. His work brings essential resources to vulnerable children while educating the public on urgent issues facing the foster care community.



Ana Beltran
Director
*Grandfamilies & Kinship Support Network:
A National Technical Assistance Center at
Generations United*

For over 20 years, Ana Beltran has worked with Generations United on the array of issues impacting grandfamilies, providing in-person technical assistance and training to state agencies, legislatures, nonprofit organizations, and legal providers in over 35 states and virtual technical assistance in almost all 50. She is also a prolific writer who has authored many articles, reports, and resources to support families. In a joint collaboration, Beltran co-authored the first set of comprehensive National Model Family Foster Home Licensing Standards on which the federal government “relied heavily.”



SESSION DESCRIPTIONS

SESSION #

1. State Associations

Session Theme: A strong state association is a critical partner in the success of child welfare agencies and community-based care organizations. Through their ability to bring together a wide variety of stakeholders, amplify the needs and concerns of both children and agencies, and provide an independent opinion in critical strategic discussions, state associations can be invaluable partners to child welfare leaders. This session will feature leaders of highly effective state organizations discussing what they do that works and their ideas for future efforts.

2. Working with Judicial Systems

Session Theme: Because the CBC model relies on local relations and partnerships, a unique opportunity exists to closely coordinate work with the courts involved in making permanency decisions for children and families. This session will focus on specific efforts in active CBC areas to coordinate, communicate, and support local courts and other stakeholders in the legal process to achieve safe and timely permanency decisions for children and families. Topics discussed will include staff training, communication planning, and problem solving.

3. Challenges of Change: How a Paradigm Shift to Community-Based Care Requires a Transformational Change in Both State Agencies and Child Welfare Service Provider Culture

Session Theme: Moving toward a community-based child welfare service model requires much more than just a new way of procuring contracts. It requires a culture change in how both the state and provider agencies view our work, our relationships, and our expectations. Participants will discuss their experiences and lessons learned.

4. Funding Models for CBC

Session Theme: Participants will review specific details of the funding models in a variety of states. Discussion will compare different models and point to lessons learned.

SESSION #

5. Medicaid: An Important Part of a Strong Continuum of Care

Session Theme: This session will explore how Medicaid is utilized differently in different states and identify ways Medicaid is being used successfully to provide important support for the physical health and behavioral health of children in care. This session will also explore ways Medicaid can help support reunification and permanency for youth.

6. Managing Risk and Liability

Session Theme: Risk sharing and liability management are critical aspects of managing a CBC contract. This session will outline specific risks and discuss strategies to manage these risks. Specific topics will include liability insurance, risk sharing strategies with state government, and legislative strategies.

7. Placement

Session Theme: Community-based care programs must quickly respond to children in need of placement and find the best placement for children as soon as possible. This session will explore the details of how the intake and placement departments of different organizations function to have the information and systems in place to make the best placement decisions in a timely fashion.

8. National Landscape

Session Theme: This session provides a unique opportunity to hear how CBC is delivered in a variety of states, from those actually doing the work. This discussion will provide an excellent setting for hearing about field tested approaches and different strategies while stimulating new ideas for advancing this work.

9. Families First Prevention Services Act (FFPSA)

Session Theme: This session provides a unique opportunity to hear specific examples of how the Families First Prevention Services Act (FFPSA) is being implemented in several states. Examples of how evidence-based practices are being utilized, how funding is being determined, and how movement away from congregate care is progressing are just some of the topics that will be discussed. Comparing and contrasting efforts in different states will stimulate new ideas and share lessons learned during the early phases of this work.

OCT
4-6
2022



SESSION #

10. Performance Measurement of Community-Based Child Welfare Contracts

Session Theme: Performance based contracts have specific, measurable outcomes which gauge the performance of a community-based care service model. Participants will discuss specific outcomes required in their state, how the performance of the community-based care is evaluated and discuss results of their work to date.

11. Contract Monitoring

Session Theme: A fundamental skill for many community-based care agencies is the ability to partner with providers and to monitor provider performance. Participants will discuss specific techniques and approaches to contracting for services and for monitoring the performance of providers.

12. Data Informed Decisions

Session Theme: CBC efforts rely on collecting data to understand system performance and to support continuous quality improvement. Analytics hold promise for helping community-based care providers work smarter and improve outcomes. Participants will discuss specific techniques and approaches for how data is collected, managed, and used to support system function, giving specific examples of projects in active CBC efforts.

13. Engaging the Community: The Secret Ingredient of “Community-Based Care”: Leveraging and Connecting Existing Community Resources

Session Theme: A community-based approach offers a unique opportunity to engage providers and to better coordinate existing services for children and families. This session will explore strategies that support this work and discuss specific examples of how this has improved systems of care.

14. New Tools

Session Theme: As technology has expanded, so have the number of tools available to reach our targeted audiences. In this session, we will discuss use of a variety of platforms used to share information and build engagement with stakeholders – ranging from legislators and donors to parents and youth. Bring your best ideas and examples from your own toolkit to this interactive session.

SESSION #

15. Brand Protection and Media Management

Session Theme: The size and scope of CBC efforts will typically attract media attention. Effective CBC operators must have clear strategies for managing media attention and inquiries. Respond to every request? Refuse to comment? Communicate only through press conferences? What is the best strategy? Participants will give examples of approaches used by current CBC leaders and discuss the pros and cons of different strategies.

16. Federal Lawsuits

Session Theme: The number of states involved in federal lawsuits challenging the performance of state child welfare systems continues to increase. This session will explore the particular nuances of delivering CBC in the midst of a consent decree, court orders, or ongoing litigation related to overall performance of the child welfare system. Participants will discuss specific state examples, impact of lawsuits, and strategies to deliver services in these environments.

17. Placement Challenges

Session Theme: A frequent challenge for child welfare programs and community-based care agencies is finding effective and affordable services for youth with more challenging behavioral, mental health, developmental, and physical health needs. Participants will discuss specific ideas and approaches for developing programs and services to best serve youth in need of this level of care.

18. Kinship: Engaging Biological Families, Relative Caregivers and Fictive Kin

Session Theme: Successfully engaging families, relatives and fictive kin helps keep children with family and can lead to improved outcomes for children. This work can be challenging and is different from traditional foster care. This discussion will explore issues and lessons learned related to successfully engaging families in the child welfare system.



Supporting the
Pursuit of Justice,
Equity, and
Independence

National Certification Board for Child Welfare Professionals



Your Vision.
Our Expertise.

The first national professional certification to enhance, elevate and advance the child welfare workforce.

State Agencies & Associations
State Certification Boards
Licensing Boards
Legislative Bodies
Individuals

We offer a multi-tiered platform for professional certification that is based on nationally-established competencies and standards.

States

- Obtain the use of a national scopes of service for five disciplines in the field of child welfare
- Build partnerships across a wide range of stakeholders and provide a consistent method for meeting state objectives for your child welfare system
- Access a national Code of Ethics and regulate the child welfare workforce in accordance with the Code
- Obtain the use of a public-access database to verify an individual's credentialing status/history
- Establish reciprocity for the workforce through common certification standards
- Annual continuing education

Employers

- Elevate the public's view of your organization's commitment to protect children and families
- Raise confidence among your stakeholders by employing persons who are professional prepared and credentialed
- Use nationally standardized competencies for five child welfare professional disciplines to facilitate hiring processes and evaluation of current employees:
 - Certified Child Welfare Supervisor
 - Certified Child Welfare Case Manager
 - Certified Child Welfare Protective Investigator
 - Certified Child Welfare Licensing Counselor
 - GUARDIAN AD LITEM (GAL)
Certified Child Advocate Manager

Contact us to learn how we can assist you in implementing a customized solution to increase the level service to children and families you serve.



NATIONAL CERTIFICATION BOARD for
CHILD WELFARE PROFESSIONALS


P: 850.222.6314 • Cell: 954.401.6825
Email: nmcgarry@childwelfareprofessional.com
1715 S. Gadsden St., Tallahassee, FL 32301
www.childwelfareprofessional.com



CENTENE[®]
Corporation

MAKING A DIFFERENCE.

At Centene, we believe we all play an important role in the healthy development of our children. As a leading healthcare enterprise, Centene provides services to more children living in the foster care system than any other managed care organization, and we are proud to join those in our communities who make a difference for children and families.


sunshine health™

 sunflower
health plan.


home state health™

25 years

of foster care case management experience

We help agencies excel at caring for children and families with complex needs.

Serving Kansas, Missouri, Nebraska, Kentucky, and West Virginia

www.kvc.org



We all need connection.



**NAVIGATING
IN UNCERTAIN
TIMES ARE
TOUGH.**

We're here to help turn what feels like this...

...into this.



ABUSE IS PREVENTABLE

Praesidium is the national leader in organizational abuse risk management. We help organizations just like yours reduce the risk of sexual abuse and false allegations by creating a safeguarding framework. Our interdisciplinary team of experts know how abuse happens in organizations, and more importantly, how to prevent it.

PRAESIDIUM

Info@PraesidiumInc.com | www.PraesidiumInc.com



SUNFLOWER HEALTH PLAN IS A PROUD SPONSOR OF THE
2022 Community-Based Child Welfare National Symposium

877-644-4623 • SunflowerHealthPlan.com



K2I
Keys to Independence

 **Embrace Families**
Community Based Care

**Driving Teens
Toward
Success**

Earning a driver's license is not just a right of passage. For a young adult in foster care, it can be the life-changing path forward to an education, a career, and a brighter future.

Through this one-of-a-kind program,
hundreds of Florida teens have earned their Keys to Independence.

keystoindependencefl.org

Prepare for Greatness™

Accreditation Guru will partner with you to achieve accreditation and optimize the performance and efficacy of your organization. Our consultants are experienced in working with the major national accrediting bodies and are fully prepared to assist you on your journey!

Scan here to make an appointment for a FREE, 30-minute meeting!



Ask about

Accreditation preparation

Board development

Strategic planning

Risk assessment

...and more!

**WE PROVIDE
INNOVATIVE SOLUTIONS
FOR HUMAN SERVICES**



ABOUT JKEA

J. K. Elder & Associates, a nationally recognized, certified Woman Owned Small Business, has partnered with 80 public and private social services organizations to improve outcomes for children, families, and communities.

The JKEA team of Subject Matters Experts are grounded in a commitment to excellence and culturally relevant programs and services that improve the lives of individuals and communities.

JKEA collaborates with executive and operational teams to address innovation and improvements in programs, operations, technology, and fiscal management. We focus on systems change, organizational transformation, enhanced training programs, and much more!

INNOVATIVE SOLUTIONS

CBC TRANSFORMATION
We support clients nationally in the implementation of large-scale systems changes associated with the transition to Community-Based Care (CBC) models for child welfare services.

GRANT WRITING
We have a successful approach to proposal development and grant writing that has assisted numerous clients achieve the funding they have sought.

PROGRAM DESIGN & EVALUATION
We offer a pragmatic and individualized approach to strategic program design and evaluation with evidence-based and emerging best practices.

COA ACCREDITATION
We work with clients seeking COA Accreditation by utilizing a collaborative, strategic, outcome-driven process that is respectful of all stakeholders.

COMPREHENSIVE SYSTEMS CHANGE
We tailor our systems change and strategic planning work to the client's needs and deliver analyses and recommendations that align with their goals.

Let us show you
what our team can do
for you and your organization

Innovative Solutions In Adolescent Mental Health

Youth Opportunity empowers young people to become successful & independent adults by establishing strong foundations of physical & emotional health while focusing on positive social & family relationships and education.

Youth Opportunity Campuses Provide:

- Clinical Services
- Psychiatric Services
- Educational Services
- Medical Services



Scan QR Code For Referral Information

Family-Match.org



Faster, Compatible Matches for a lifetime of family

Discover Family-Match, an online tool that brings unparalleled efficiency for child placement agencies who:

- need to grow their pool of prospective foster + adoptive parents
- seek to expedite compatible adoption matches for children without identified families



Pictured: Nedd Family- brought together through Adoption-Share's strategic partnership with Selfless Love Foundation, a nonprofit making it possible for agencies and families to utilize Adoption-Share's Family-Match Program for adoption matching at no cost in the state of Florida.



Better Placements.
Better Lives.

Research-backed

PLACEMENT MATCHING

Foster Care and Adoption

Foster Care Technologies

FosterCareTech.com

YOUR MISSION IS PROTECTED

Finding quality insurance at a reasonable rate is more challenging than ever.

By understanding your unique needs, we help ease the stress of insurance so you can focus on the community you serve.

Partner with an **experienced nonprofit risk advisor.**



RISK EXPERTS. TRUSTED PARTNERS. CARING PEOPLE.

E info@millercares.com | **P** 816.333.3000 | **millercares.com**



Ennis Center for Children
PRESENTS



The Future of
Community Based Care
In Mid-Michigan

Learn More at

mi-fact.org // Info@mi-fact.org





FivePoints

Empowering Your Community-Based Child Welfare Agency with Software that Works



OUR SOFTWARE IS DESIGNED TO SUPPORT STATE DEPARTMENTS, LEAD AGENCIES AND/OR LOCAL PROVIDERS



**ROLES BASED SECURITY TO
HANDLE COMPLEX HIERARCHIES**



**DASHBOARD DESIGNS FOR
MANAGEMENT, SUPERVISORS
AND FRONT LINE STAFF**



**PERFORMANCE OUTCOMES,
BUSINESS INTELLIGENCE, AND
REPORTING**



MOBILE RESPONSIVE AND APPS

Five Points has been working with community based child welfare agencies for nearly 20 years focusing on developing software solutions to streamline workflow, manage privatized systems of care, and to report and monitor performance outcomes.

Functionality includes:

- > Case Management
- > Provider Management
- > Youth Intake / Assessments
- > Matching / Placement
- > Service Referral
- > Finance
- > Foster / Adoptive Parent APP / Portal
- > Behavioral Health
- > Eligibility / Claims Processing

FOR MORE INFORMATION CONTACT

Chris Pantaleon,
Director of Business Development
407.468.6918



COME SEE US AT OUR BOOTH OR VISIT FIVEPTG.COM TO LEARN MORE.